



# La Jolla Symphony & Chorus

**2015-2016 Season**

**Soundscape San Diego:  
exploration and remembrance**

*December 5-6, 2015*

*Mandeville Auditorium*

**Steven Schick**  
Music Director

**David Chase**  
Choral Director



## Our new favorite things:

Making friends while  
meeting neighbors

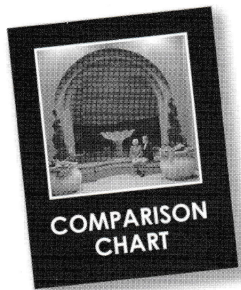
Dining out while staying in

Protecting the future while  
enjoying the present

**Steve and Wendy Blumberg**

La Costa Glen Residents Since 2012

Dr. Steve Blumberg and his wife, Wendy, wanted to see life differently in the coming years. That's why they moved to La Costa Glen — to live without worries about their house, their yard, or even their long-term care. With access to care included and a repayable entrance fee, they knew they were getting the most value for their retirement, but Steve and Wendy never expected to enjoy every day so much more.



What can you expect at La Costa Glen?  
Find out by calling us at **1-800-796-9589**  
today to request your free comparison  
chart, and see how much **more** you'll  
get out of life at La Costa Glen.



# La Costa Glen

CARLSBAD

A CONTINUING LIFE® RETIREMENT COMMUNITY

Why Compromise?  
**Expect More.**



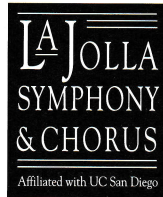
Find us on  
**Facebook**



Continuing Life LLC does not own, nor is it financially responsible for, La Costa Glen Carlsbad CCRC LLC, but allows the use of the *Continuing Life*® mark under a services and license agreement. State of California License #374600637 • Certificate of Authority #201

1940 Levante St.  
Carlsbad, CA 92009  
Toll-Free 1-800-796-9589  
LaCostaGlen.com

**Steven Schick**  
Music Director



**David Chase**  
Choral Director

**Saturday, December 5, 2015, 7:30pm**  
**Sunday, December 6, 2015, 2:00pm**  
Mandeville Auditorium, UCSD

**Steven Schick conducting**

**JOHN LUTHER ADAMS**    **The Light That Fills the World**

**ORI TALMON**    **Nefakh** (Hebrew: *volume*)  
WORLD PREMIERE / THOMAS NEE COMMISSION

**SAMUEL BARBER**    **Prayers of Kierkegaard, Opus 30**  
*O Thou Who art unchangeable*  
*Lord Jesus Christ, who suffered all life long*  
*Father in Heaven, well we know that it is Thou*  
*Father in Heaven! Hold not our sins up against us*

*Zen Wu, soprano*  
*Latifah Smith, mezzo-soprano*  
*Brandon Elán Thibeault, tenor*

**INTERMISSION**

**AARON COPLAND**    **Symphony No. 3**  
*Molto moderato*  
*Allegro molto*  
*Andantino quasi allegretto*  
*Molto deliberato*

*Symphony No. 3 by arrangement with Boosey & Hawkes, Inc.*

*Unauthorized photography and audio/video recording are prohibited during this performance.*  
*No texting or cell phone use of any kind allowed.*

We gratefully acknowledge our underwriters for this concert  
**Steve & Janet Shields / Bloor Family**

**2015 - 2016**  
**Board of**  
**Directors**

**Officers**

Paul Symczak  
**President**

Pat Finn  
**Vice President**

Evon Carpenter  
**Treasurer**

Catherine Palmer  
**Secretary**

Stephen L. Marsh  
**Immediate Past President**

Mark Appelbaum  
Peter Gourevitch  
Ida Houby  
Carol Lam  
Brian Schottlaender

**Ex-Officio**

David Chase  
Diane Salisbury  
Steven Schick

**Honorary**  
**Members**

Eloise Duff  
David Parris  
Jeanne Saier  
Rand Steiger

**Honorary**  
**Artistic Board**

John Luther Adams  
Claire Chase  
Philip Glass  
David Lang  
Wu Man  
Bernard Rands

**Mission**  
**Statement**

Rooted in San Diego for over 60 years, the La Jolla Symphony and Chorus enriches our lives through affordable concerts of ground-breaking, traditional and contemporary classical music.

# From the Conductor

I don't remember the first time I met Arthur Wagner, but I do remember the last time I saw him. He was sitting middle center at the Libbey Bowl in Ojai, his arm around the shoulder of his beautiful Molli. When I came by at intermission to say hello, he gave me a wry smile and in the incisive cadences of the Bronx immediately began probing the Boulez piece I had just conducted. With Arthur, small talk was never all that small.

Arthur Wagner had the kind of expansive education that has almost ceased to exist in this day of goal-oriented kindergartners whose parents are already planning their surgical residencies or scheming about which Justice they'll clerk for. Arthur studied philosophy, sold shoes, rode horses, skied the Sawtooths (where more than 60 years ago he met Molli) and eventually earned a doctorate in theater at Stanford University. He spent the first part of his adult life doing nearly everything and the second part doing one thing. And that was a big, luminous extraordinary thing: he nurtured the artistic life of San Diego—ALL of the arts. Almost every arts organization in this city counted Arthur and Molli as enthusiastic patrons, including the La Jolla Symphony and Chorus. But he will be particularly remembered for his remarkable leadership in building the renowned department of Theatre and Dance at UC San Diego and creating a partnership and home for the La Jolla Playhouse.

The list of his celebrated acting students is long, but with Arthur mentorship didn't stop with a diploma. He followed his students after they left UC San Diego, traveling to attend important premieres, celebrating their successes and easing their failures. The love they felt in return for him was symbolized by the crowd of current acting students—many of whom were not born when Arthur last stood in front of a class—standing four deep on a hot catwalk above UCSD's Potiker Theatre to pay their respects during a two-hour plus memorial service.

This is a space that I normally use for comments about the music you are about to hear. This time the most important thing for you to know about this concert is that we are dedicating it to Arthur. And as we dedicate it, we'll remember his keen intellect, the generosity of his teaching, and his support of adventurous creativity in all the arts. But the main thing, the thing I will lay upon my heart as I remember Arthur Wagner is simply his love: for the elegance of good acting, for living fully and fearlessly, and, above all, for Molli. The only times I ever saw him without her was during Arthur's tenure as a member of the board of the La Jolla Symphony and Chorus. You spare those you love from board meetings.

So Arthur, we'll be thinking of you as we play this concert. We'll think of you during the premiere of Ori Talmon's Nee Commission work and remember your support for emerging talent. As Barber sets Søren Kierkegaard's prayer of "longing for the highest good," we'll think of your vision of a great school of theatre and dance housed at UCSD. And, most especially when the beginning of the last movement of Copland's *Third Symphony* rolls around, with its theme better known as "Fanfare for the Common Man," we'll think of you, Arthur Wagner: philosopher, shoe salesman, consummate artist, dedicated teacher, extraordinary man. ■

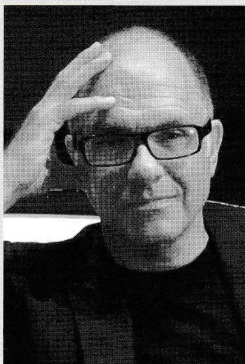


Photo: Bill Dean

## Steven Schick conductor

Percussionist, conductor, and author Steven Schick was born in Iowa and raised in a farming family. For forty years he has championed contemporary music by commissioning or premiering more than 150 new works. He was the founding percussionist of the Bang on

a Can All-Stars (1992-2002) and served as Artistic Director of the Centre International de Percussion de Genève (2000-2005). Schick is founder and Artistic Director of the percussion group, "red fish blue fish." Currently he is Music Director of the La Jolla Symphony and Chorus and Artistic Director of the San Francisco Contemporary Music Players. He was Music Director of the June 2015 Ojai Music Festival, and in 2012 was named the first Artist-in-Residence with the International Contemporary Ensemble (ICE).

Schick founded and is currently Artistic Director of "Roots and Rhizomes," a summer course on contemporary percussion music held at the Banff Centre for the Arts. He maintains a lively schedule of guest conducting including appearances with the BBC Scottish Symphony Orchestra, the Saint Paul Chamber Orchestra, the Nova Chamber Ensemble and the Asko/Schönberg Ensemble. Among his acclaimed publications are a book, "The Percussionist's Art: Same Bed, Different Dreams," and numerous recordings of contemporary percussion music including a 3 CD set of the complete percussion music of Iannis Xenakis (Mode). Mode released a companion recording on DVD of the early percussion music of Karlheinz Stockhausen in September of 2014.

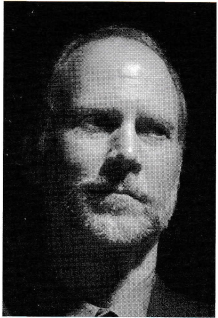
In 2014, Schick received two notable honors: he was named Champion of New Music by the American Composers Forum, and he was inducted into the Percussion Hall of Fame. Steven Schick is a Distinguished Professor of Music at the University of California, San Diego.

# Program Notes by Eric Bromberger

## The Light That Fills the World

JOHN LUTHER ADAMS

Born January 23, 1953, Meridian, Mississippi



John Luther Adams graduated from CalArts in Valencia and then made a curious choice for a young composer intent on developing a career: in 1978 he moved to Alaska, far from the mainstream of American concert life, and he has made his life and career as a composer in that state. John Luther Adams has been described as “an environmental composer,” which may be a slippery term. While Adams sometimes makes use of native Alaskan

musical materials, he has been more concerned musically with Alaska as a natural force: its harshness, its variety, its natural rhythms. He has said: “My music has always been profoundly influenced by the natural world and a strong sense of place. Through sustained listening to the subtle resonances of the northern soundscape, I hope to explore the territory of ‘sonic geography’—that region between place and culture... between environment and imagination.”

Adams wrote *The Light That Fills the World* in 1999. The score prints the composer’s own program note:

For much of the year, the world in which I live is a vast, white canvas.

Last winter, reading art critic John Gage’s essay “Color As Subject,” I was struck by the equivalence between the view out my window and Mark Rothko’s use of white in his paintings. The exquisite colors on the snow and those in Rothko’s translucent fields suggested to me broad diatonic washes suffused with slowly-changing chromatic harmonies. Slowly, faintly, I began to hear a new music stripped to its most essential elements: harmony, timbre and texture, suspended in what Morton Feldman called “time undisturbed.”

The ideal of the sublime landscape has long been an obsessive metaphor for my work. But the resonances of my recent musical landscapes are more internal, a little less obviously connected with the external world. If in the past the melodic elements of the music have somehow spoken of my own subjective presence in the landscape, in the newer music there are no sharply-defined lines—only slowly-changing colors on a timeless white field. All the edges are blurred. Individual sounds are diffused into a continuous texture, with a minimum of what the art critics call “incident.” All the sounds meld into one unbroken aural horizon. Harmony and color become one with space and time.

Listening to these “allover” textures, it’s difficult to concentrate for long on a single sound. The music wants to move us beyond syntactical meaning, even beyond images, into the experience of listening within an enveloping whole, a transpersonal presence. These seemingly-static fields of sound embrace constant change. But rather than moving on a journey through a musical landscape, the experience of listening is more like sitting in the same place as the wind and weather, the light and shadows slowly change. The longer we stay in one place, the more we notice change.

*The Light That Fills the World* was written in late winter and early spring when—following the long darkness of winter—the world is still white and filled with new light. If the unrelenting texture of this music embodies stasis, I hope its prevalent tone evokes the ecstatic.

The title of the piece is borrowed from an Inuit song which sings of the close relationship between beauty and terror, risk and revelation.

*John Luther Adams: Fairbanks, Alaska—August 1999*

My fears,  
those small ones  
that I thought so big,  
for all the vital things  
I had to get and to reach.

When, in fine weather,  
I drifted out too far in my kayak  
And thought myself in danger.

And yet there is only  
one great thing,  
the only thing:

To live to see in huts and on journeys  
the great day that dawns,  
and the light that fills the world.

—Inuit song

SEASON 2015-2016  
*approachable, uplifting & stimulating chamber music*

# Escape *the* Ordinary!

Concerts *for everyone*

**MINGLE SERIES**  
Balboa Park

**LIBERTY SERIES**  
Point Loma, NTC

**SoundWAVE SERIES**  
Oceanside Museum of Art

**REMIXX SERIES**  
Downtown San Diego

**CABERNET SERIES**  
Private Homes

**CAMARADA**  
Est. 1994

camarada.org • 619.231.3702 • music@camarada.org

## Nefakh (Hebrew: *Volume*)

ORI TALMON

Born 1974, Israel



**The following note has been provided by the composer.**

*Nefakh* is composed after the abstract painting “Catamurons” (1963) by the French painter Simon Hantaï (1922-2008). The piece traces the process of contemplating the painting: the eyes glide from one color and shape to the other and

*paths* of the observer’s gaze are created. These gaze-paths are unpredictable and diverse, as the painting does not suggest specific areas that are more important than others. Thus the painting encourages an ongoing attempt at reading and associating the colors and shapes.

The music in *Nefakh* offers the same experience through listening. The musical textures are shaped as rich and full so to avoid suggesting one prominent musical element that stands out in relation to the others. The music offers “volume” that allows the listener to choose an own path-of-attention, by paying attention to the musical “surface,” diving to the depth of the sound, or by continuously alternating between the two. ■

## Ori Talmon

Composer, Thomas Nee Commission

Ori Talmon was born in Israel and spent the last seven years living in Europe and the United States. His music has been performed in festivals such as Impuls (Graz, Austria), Tzllil Meudcan (Tel-Aviv, Israel), Der Sommer in Stuttgart (Stuttgart, Germany) and the Donaueschinger Musiktage (Off-program, Germany), and in concerts in the U.S., Switzerland, France, Belgium and Korea. After finishing his undergraduate studies in Computer Sciences and Music Composition (Cum Laude) in his home country, he moved to Germany, where he completed his Master’s in Composition, studying with Marco Stroppa at the State University of Music and Performing Arts in Stuttgart. Since 2011 he lives in San Diego and is pursuing his Ph.D. studies, working primarily with Roger Reynolds.

## Thomas Nee Commission

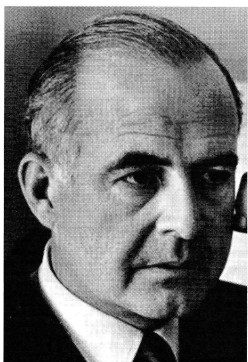
In 1997, the La Jolla Symphony & Chorus established a commissioning fund in honor of retiring Music Director Thomas Nee that would be used to award a UCSD graduate-level composition student each year with an orchestral or choral commission. The student is guided through the composition process by his or her UCSD instructors, with the oversight of the LJS&C Music Director. The compositions are performed on the LJS&C subscription series the following season—an invaluable opportunity for young composers to hear their works performed by a full orchestra (and chorus).

## Prayers of Kierkegaard, Opus 30

SAMUEL BARBER

Born March 9, 1910, West Chester, PA

Died January 23, 1981, New York City



Barber’s *Prayers of Kierkegaard* took shape over a long period of time. The music got its start in 1942, when the Koussevitzky Music Foundation asked the young composer for a new work to be dedicated to the memory of Serge Koussevitzky’s wife Natalie. But World War II intervened (Barber served in the Army Air Corps), and after the war Barber spent several years in Europe. He did not return to the commission until 1953, when he began work on what would be

*Prayers of Kierkegaard*, finishing it the following January. By this time, twelve years after the original commission, Koussevitzky himself had died, and Barber dedicated his new score “To the Memory of Serge and Natalie Koussevitzky.”

Barber was one of the most widely-read of all composers: across the span of his career, he set texts by Shelley, Browning, Tennyson, Swinburne, Arnold, Hopkins, Stevenson, Houseman, Joyce, Yeats, Rilke, Agee, Frost, Graves, and many, many more. Now he turned to the writings of the Danish philosopher Søren Kierkegaard (1813-1855). Disgusted with organized religion, Kierkegaard had left the church and sought a personal relation with God. His goal as an individual was to find a way to be—and

to act—through that personal relationship, and Kierkegaard has been described, perhaps paradoxically, as a “Christian existentialist.” Barber chose four of the philosopher’s prayers: two from Kierkegaard’s *Journals*, one from his *Christian Discourses*, and one from *The Unchangeableness of God*. Barber scored *Prayers* for a soprano soloist (with smaller roles for alto and tenor soloists), a large chorus that could be divided into two and three groups, and orchestra. Leontyne Price was soprano soloist when Charles Munch led the Boston Symphony Orchestra in the premiere on December 3, 1954.

*Prayers of Kierkegaard* is one of Barber’s finest creations. The composer responded strongly to Kierkegaard’s texts, and the knowledge that he was writing for Leontyne Price, one of his favorite performers, served as further inspiration. The four movements of *Prayers*, which are performed continuously, can be dramatic or contemplative, beautiful or violent, ascetic or lush, simple or complex. Each of the four texts is a hymn of praise to Kierkegaard’s “Father in Heaven,” and those prayers—and Barber’s music—are full of pain, regret, hope, intensity, and finally confidence.

Barber greatly admired the spare beauty of Gregorian chant, and he begins *O Thou Who art unchangeable* with a conscious evocation of that form. Alone and unharmonized, male voices sing a long line that changes meter almost every measure. This “chant”—Barber’s own, rather than an actual Gregorian chant—has almost reached the end of the first prayer when the chorus makes its dramatic entrance on the line “But nothing changes Thee.” The chorus gracefully recalls earlier lines from the prayer, and the movement concludes on a powerful restatement of the prayer’s final two lines.

Out of the silence, the second prayer begins. A long introduction for strings and oboe leads to the entrance of the soprano soloist, who sings of Christ's suffering on behalf of mankind. Shortest of the four movements, this is also the most beautiful. The music flows directly into the third movement, *Father in Heaven, well we know*, and now the tempo eases ahead. The chorus, joined by the three soloists, leads the way as the music gradually builds to a great climax in the prayer's second stanza: "But when longing lays hold of us." Barber constructs the concluding section ("When Thou in the longing") as a passacaglia, the entrances of the voices at first accompanied by the unusual combination of harp and xylophone.

The last movement opens with the orchestra alone, but this is not a quiet transition to the final prayer. Instead, the orchestra explodes into a violent dance, hurled forward along instantaneous exchanges between the different sections of the orchestra, which are treated as separate blocks of sound. Into this tumult, the chorus makes its own dramatic entrance on the words "Father in Heaven! Hold not our sins up against us." Barber marshals all his forces for a climactic statement of God's strength and forgiveness before the violence diminishes, and *Prayers of Kierkegaard* concludes as the chorus chants its final plea for mercy. ■



### Zen Wu soprano

American dramatic coloratura soprano Zen Wu, a native of the San Francisco Bay Area, studied as an undergraduate with avant garde baritone Philip Larson at the University of California San Diego. She sang with San Diego area professional ensembles such as SACRA/PROFANA and the San Diego Opera Chorus before making her mainstage debut in 2014 as Lauretta in Puccini's *Gianni Schicchi* with the Riverside Lyric Opera.

Lauded for her interpretations of both canon and 20th century and new repertoire, Wu returned to San Diego Opera in its renaissance as a guest soloist singing excerpts from John Adams' *Nixon in China* as Madame Mao. She currently studies with tenor Enrique Toral and resides in New York City, where she performed the roles of Donna Anna (*Don Giovanni*), Konstanze (*The Abduction from the Seraglio*), Elettra (*Idomeneo*) and Giannetta (*The Elixir of Love*) in the 2014-2015 season.

### Latifah Smith mezzo-soprano

San Diego native Latifah Smith is a Vocal Performance major studying at San Diego State University (SDSU). At SDSU she has been a featured soloist in the California premiere of *To Be Certain of the Dawn*, an oratorio by Stephen Paulus, and recently played the Sorcerer in Henry Purcell's iconic one-act opera, *Dido and Aeneas*. Quickly becoming an in-demand mezzo-soprano, she is happy to be joining the La Jolla Symphony & Chorus for the second time.

### Brandon Elán Thibeault tenor

Brandon Elán Thibeault is a Los Angeles native, currently earning his undergraduate degree in Vocal Performance at San Diego State University (SDSU). He is studying voice with Michelle Ayres, and serves as section leader in the SDSU Chamber Choir under the direction of Dr. Patrick Walders. He has earned roles in SDSU's opera productions and has been an apprentice in the *San Diego Pro Arte Voices Summer Choral Festival*. This is the second time he has performed with the La Jolla Symphony & Chorus.

## Prayers of Kierkegaard

Søren Kierkegaard

O Thou Who art unchangeable, Whom nothing changes,  
 May we find our rest  
 and remain at rest  
 in Thee unchanging.  
 Thou art moved  
 and moved in infinite love by all things:  
 the need of a sparrow, even this moves Thee;  
 and what we scarcely see,  
 a human sigh,  
 this moves Thee, O infinite Love!  
 But nothing changes Thee, O Thou unchanging!

Lord Jesus Christ  
 Who suffered all life long  
 that I, too might be saved,  
 and Whose suffering still knows no end,  
 This, too, wilt Thou endure:  
 saving and redeeming me,  
 this patient suffering of me  
 with whom Thou hast to do—  
 I, who so often go astray.

Father in Heaven,  
 well we know that it is Thou  
 that giveth both to will and to do,  
 that also longing,  
 when it leads us to renew  
 the fellowship with our Saviour and Redeemer,  
 is from Thee.  
 Father in Heaven, longing is Thy gift.  
 But when longing lays hold of us,  
 oh, that we might lay hold of the longing!  
 when it would carry us away,  
 that we also might give ourselves up!  
 when Thou art near to summon us,  
 that we also in prayer might stay near Thee!  
 When Thou in the longing  
 dost offer us the highest good,  
 oh, that we might hold it fast!

Father in Heaven!  
 Hold not our sins up against us  
 But hold us up against our sins,  
 So that the thought of Thee should not remind us  
 Of what we have committed,  
 But of what Thou didst forgive;  
 Not how we went astray,  
 But how Thou didst save us!

# PROFILES IN GIVING



**Jenny & Scott Smerud**  
orchestra member, subscriber

Jenny and Scott Smerud have been enthusiastic supporters of La Jolla Symphony and Chorus ever since Jenny began playing clarinet with the orchestra in 2003. "This organization is so important to me and the other musicians who have the privilege to be a part of our performances," says Jenny. "Because the musicians are all volunteers, we are never limited by our musical resources, and thanks to the generous support of our patrons we are able to perform significant pieces from the current repertoire and premiere and commission new works. LJS&C is a special organization. Scott and I are honored to support it with annual gifts and our contribution to the endowment."

Scott Smerud is a realtor and attorney who helps his friends and referrals buy and sell real estate. Smerud Real Estate gives back to the community by donating \$500 from each transaction and continues to support LJS&C with those gifts. Jenny Smerud is a CPA and a partner at AKT, LLP. She served on the LJS&C Association board for seven years and recently ended her term as Treasurer.

## *Sostenuto* Sustaining Our Musical Future

### *A Message from Endowment Chair Amee Wood*

Dear Friends,

For the last 14 months, I've used this space to update patrons on our endowment campaign progress. And though we have far to go to meet our \$1.5 million goal, I am truly in awe of how far we've come.

So, this holiday season, instead of my usual endowment letter, I'd like to simply say *thank you*. Thank you to all of the generous folks listed on these pages, and to those of you who are considering a gift in the future.

**HAPPY HOLIDAYS (filled with music!)**

**And best wishes for HEALTH,**

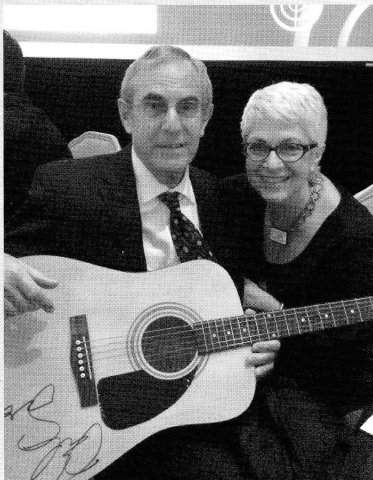
**HAPPINESS &**

**PROSPERITY (for all of us!)**

**in 2016!**

*Amee Wood*

P.S. I will return in February to update you on more endowment news!



**Val & Alex Rubins** chorus member and subscriber

La Jolla Symphony & Chorus has rightly taken its place with the top San Diego arts organizations. It has the longevity, service to community, consistent quality, and financial stability that are hallmarks of the best arts institutions. When Alex and I made the decision to make a significant contribution of stocks to the endowment campaign, it was with the knowledge that we were helping to sustain this unique community of students and amateur musicians.

I have been in the chorus for 34 years—more than half my life! It has been an honor and the greatest pleasure to be able to rehearse and perform with great conductors like David Chase, Steven Schick, Tom Nee, Robert Shaw, and others. I have been elevated, educated and challenged by the music, as I feel sure our audience has as well. I can't imagine my life without LJS&C. I hope you will consider making a donation to Sostenuto, our endowment fund. We are close to reaching our goal and your support can help to make it possible. Enjoy the concert!



# Sostenuto Endowment Gifts

## \$200,000+

Anonymous

## \$50,000+

LiveLikeJoan Fund  
Rancho Santa Fe Foundation  
Amee\* Wood & Eric Mustonen

## \$40,000+

Marie Nelson  
in honor of Nelson & Kean families

## \$25,000+

Frances & Don Diehl  
Ken Fitzgerald\*  
in honor of Joan L. Fitzgerald  
Clare\* & Paul J. Friedman  
Ida\* Houby & Bill\* Miller

## \$20,000+

Gayle Barsamian & David Clapp  
in honor of Steven Schick  
Karen\* Johns & Peter Jorgensen  
Julie & Don MacNeil  
Louise Wood

## \$15,000+

J. Lawrence Carter  
Diane McKay & Andrew\* King  
Brenda & Steven Schick  
Jim\* Swift & Suzanne Bosch-Swift

## \$10,000+

Anonymous  
Dr. Robert Engler & Julie Ruedi  
in memory of Dr. Joan Forrest  
Beda\* & Jerry Farrell  
in memory of Luci Demma  
Stephen L. Marsh\*  
Nancy Moore\*  
in memory of Anthony Paul Moore  
Jeanne\* & Milton Saier  
Timmstrom Foundation

## \$7,500+

Evon\* & John\* Carpenter  
Ann & Walt\* Desmond  
in honor of David Chase  
Karen\* Erickson & Michael Gillis  
in memory of Doris George  
Val\* & Alex Rubins

## \$5,000+

Anonymous  
June\* & Dan Allen  
Mary Berend  
Bernard Eggertsen & Florence Nemkov  
Sally & Einar Gall  
in honor of David Chase  
Joan Kastner  
Kempton Family Trust  
Beverly & Ted Kilman  
Esther & Bob LaPorta  
Mary Nee  
in memory of Tom Nee  
Catherine & Bob Palmer  
Janet\* & Steve\* Shields

## \$2,500+

Pat & Eric Bromberger  
Ann & David Chase  
Joan & Frank\*\* Dwinnell  
Elinor Elphick\*  
Celia Falicov & Peter\* Gourevitch  
Pat Finn & Walter Burkhard  
Michael McCann  
Smerud Real Estate, Inc.  
Otto Sorensen  
in memory of Elli Valborg Sorensen  
Mary Ellen\* & Peter C. Walther  
in memory of Clarence & Pansy Buechele

## \$2,000+

Clarice & Neil Hokanson  
Hima Joshi\* & Jeremy Copp  
in honor of David Chase  
Francis Tonello  
Elena\* Yarritu & Ehud Kedar

## \$1,500+

Ellen Bevier  
in honor of Ida Houby & Bill Miller  
Gregory Brown  
in honor of Martha Neal-Brown  
Tom Schubert\*

## \$1,000+

Arleene Antin & Leonard Ozerkis  
Sue & Mark Appelbaum  
Lois Day  
Julia S. Falk  
Darrell & D. Ann Fanestil  
Deanna\* & Eldy Johnson  
Donna Johnson\*  
in honor of David Chase

Cynthia\* & William Koepcke  
in honor of David Chase  
Monique Kunewalder  
Judith K. Nyquist  
Barbara Rosen  
Manuel & Paula Rotenberg  
Diane Salisbury & Robert Whitley  
Sherri & Brian Schottlaender  
Carolyn Sechrist\*  
Gigi & Bill Simmons  
in honor of LJS&C 60th anniversary  
Carol & Stuart Smith  
Pamela Surko\*  
Paul Symczak & Debra Weiner

## Up to \$999

Anonymous  
Susan & Joseph\* Allen  
in memory of William B. French  
Ted\* & Carol Bietz  
in memory of Tom Nee  
Mary Ann Calcott  
Janet & Maarten Chrispeels  
Lauren & Gordon Clark  
Loie Flood\*  
Anne\* Gero-Stillwell & Will Stillwell  
John J. & Mary A. Griffin  
Sarah & Ronald Jensen  
in memory of Frank Dwinnell  
Burton & Dana Levine  
Claudia & Carl Lowenstein  
Carolyn Manifold\*  
Wendy & Michael Matalon  
Douglas & Susan McLeod  
Marianne Nicols  
Deborah\* & Ray\* Park  
Barbara\* & Tom Peisch  
Adam Perez  
Jean & Milton Richlin  
Gerald Seifert  
Lisa Robock Shaffer  
Jan & Barry Sharpless  
Gay Sinclair  
Carol\* & Thomas Slaughter  
in honor of David Chase  
Joann & David Stang  
Joan & Peter Suffredini  
Eleanor Tumsuden  
Dennis Turner\*  
Carey Wall  
Ellen Warner-Scott

*\*orchestra or chorus musician*

*\*\*deceased*

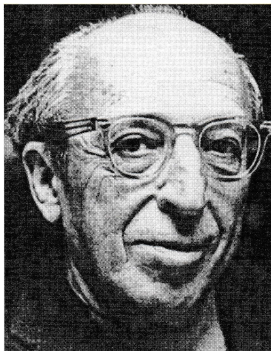
**For more information about ways to give to the "Sostenuto" endowment campaign, or to receive a brochure,**  
please contact Executive Director Diane Salisbury at 858-822-3774. Information can also be found  
at [www.lajollasympphony.com](http://www.lajollasympphony.com) under the "Support LJS&C" tab. *Thank you!*

## Symphony No. 3

AARON COPLAND

Born November 14, 1900, Brooklyn

Died December 2, 1990, North Tarrytown, NY



Aaron Copland is not a name we automatically associate with the symphony. As a composer he was more readily drawn to smaller and more personal forms like music for dance, solo piano, chamber ensembles, and songs. Even his first works with this title are not symphonies in the traditional sense. The *Dance Symphony* was assembled from movements of a ballet, the *Symphony for Organ and Orchestra* was actually a solo

vehicle for his teacher Nadia Boulanger, and his *Short Symphony*, one of the most neglected of his works, is better known in its arrangement as a *Sextet*. For the most part, Copland was not attracted to the kind of Major Statement and the "grand playing-together" implicit in the title and tradition of the symphony.

But the social realities of the Depression and later the Second World War led Copland to a simpler, more public style, and when Serge Koussevitzky commissioned a new orchestral work from him in March 1944 the lure of the symphony proved irresistible. Copland readily admitted: "I think the greatest single influence on the *Third Symphony* was Koussevitzky. Without compromising my own integrity I was intent upon giving him the sort of piece he liked. And he liked music in the grand manner." Copland's friends were aware that something was

afoot. Samuel Barber, himself not by nature a symphonist, cheered him on: "I hope you will knuckle down to a good symphony. We deserve it of you, and your career is all set for it. Forza!"

But the symphony took a long time. Copland began work on it during the summer of 1944, at exactly the moment that — on the other side of the planet — Serge Prokofiev was beginning his *Fifth Symphony*, a similarly triumphant utterance in time of war. It took Copland until April 1945 to compose the first movement, and he spent the summer of 1945 writing the second as the war came to its end. He worked on the third from the fall of that year until the following spring and began the final movement in June 1946. In the meantime, Koussevitzky went ahead and announced the premiere for that fall, and Copland had to scramble to complete the *Third Symphony* on September 29, 1946, three weeks to the day before the first performance. It was a huge popular success. Koussevitzky proclaimed that "There is no doubt about it — this is the greatest American symphony. It goes from heart to heart." The New York Critics Circle agreed, giving it their award as the finest new American work performed during the 1946-47 season.

Copland's *Third* may be a heroic symphony, but it is constructed on some very non-symphonic procedures. Rather than beginning with the conflict-based movement that has launched symphonies since the time of Beethoven, Copland opens in absolute calm. *Molto moderato* and *with simple expression* are his markings, and violins in octaves very quietly lay out the serene opening idea. More themes follow: a poised melody for violas and English horn and a *marcato* subject for trombones. This movement is not in the expected sonata form, nor does it build a music-drama out of the collision of its themes. Instead,

## CHATEAU *La Jolla* INN

A RESIDENTIAL COMMUNITY

233 Prospect Street, La Jolla, CA 92037



**Go ahead... live your life to the fullest in an enticing environment that is Chateau La Jolla Inn... comfortable, carefree and surprisingly affordable.**

**Are you ready to enjoy the freedom to pursue your interests at your own pace and on your own terms?**

Chateau La Jolla Inn is ready to provide an ideal opportunity for those seeking that freedom in a gracious and friendly environment nestled between the Pacific Ocean and the village that is La Jolla.

**No "Buy-in" or "Entrance" Fees!**

Please call Kim for a tour and enjoy a delicious, relaxing meal while you're here.

**858.459.4451 | [www.chateaulajollainn.com](http://www.chateaulajollainn.com)**



it functions as a prelude to the symphony: it introduces themes (some of these will play important roles later on), rises to a climax, and falls back to end quietly. *Cantabile molto espressivo*, Copland instructs his players as the opening movement of this wartime symphony ends not in thunder but in radiant calm.

More surprises come in the middle two movements. Externally, they are the expected scherzo in ABA form and slow movement, but behind these forms both are dance movements, and it is worth noting that Copland's own recordings of this symphony emphasize not so much its grandeur as its lighter textures and dance rhythms. The *Allegro molto* bursts to life on a salvo of noisy fanfares, but the true main subject is not heard until moments later when violas and lower woodwinds speed ahead. Here the music dances with cheerful energy and races straight into the trio section, built on flowing melodies that sound as if they might have come from Copland's cowboy ballets. He was adamant, however: "One aspect of the symphony ought to be pointed out: it contains no folk or popular material. During the late twenties it was customary to pigeonhole me as a composer of symphonic jazz, with emphasis on the jazz. More recently I have been cataloged as a purveyor of Americana. Any reference to jazz or folk-material in this work was purely unconscious." The opening fanfares return to drive the scherzo to a mighty close.

Unusual things continue to happen at the opening of the *Andantino quasi allegretto*: Copland begins to draw on material presented earlier in the symphony, a technique that will become increasingly important over the final two movements. The opening of the third movement—for the two violin sections alone and treacherously difficult in terms of intonation and ensemble—is derived from the

*marcato* trombone theme of the first movement, but now that fierce material is transformed into haunting, silky string lines. All this, however, is only preparation for the true business of this movement, which is a series of variations on a lovely flute theme. This theme, which sounds as if it has wandered in from Copland's ballet *Appalachian Spring*, begins quietly and gracefully, but soon the variations turn athletic and dance with an unexpected vigor. Gradually Copland reins in all this energy, and the movement comes to a close on a return of its quiet opening material.

But it is not a true close, for the music continues without pause into the finale. Over a quiet string chord, two flutes very delicately outline Copland's own *Fanfare for the Common Man*, composed in 1942, and this quickly erupts into a titanic statement by brass and percussion. Again, a surprise: this is not the true beginning of the finale but only a call to order. The main body of the movement arrives as solo oboe lays out an ornate tune that quickly begins to dance on its own. Here, finally, is the symphony's sonata-form movement, but even now the structure remains free: the second subject, which moves easily along syncopated rhythms, does not show up until the development is well underway. The movement dances to a great climax on a strident raspberry for full orchestra, full of flutter-tonguing from the winds. In the aftermath of this wild chord, the music seems stunned and uncertain, and then it begins to move: over bits of the fanfare theme and the very opening of the symphony, the music gathers energy and presses ahead. The finale's second theme—its syncopations smoothed out—powers its way into the final pages, where the symphony's very opening returns. What had sounded serene and spacious at the very beginning now returns in grandeur as the *Third Symphony* pounds its way to a knock-out close. ■

# Enchanted Evening



Carol Lam, Mark Burnett



Kevin Smith, Melissa Troyer, Arwen Daum



Mark Appelbaum, Walt Burkhard, Pat Finn, Ida Houby



Bill and Cigi Simmons, Sherri and Brian Schottlaender



Arts Angel Vicki Heins-Shaw, Stew Shaw, Diane Salisbury



Stew Shaw, Steven Schick, Bill Zieffle, Ellie Dominguez

On Saturday, October 17, La Jolla Symphony & Chorus supporters gathered at The Westgate Hotel for the kick-off event of the 2015-2016 season. This year's Gala, themed "Enchanted Evening," began with a silent auction and reception where guests bid on over 60 auction items. Arts Angel Vicki Heins-Shaw was duly celebrated during the dinner hour, and before the live auction, the winning raffle ticket was picked for the Instant Wine Cellar, with Ameer Wood taking home the prize. Thank you to our Gala Committee, auction donors, event sponsors, winning bidders, and guests, and to Robert Whitley for donating all of the fine wine for this event.

# La Jolla Symphony & Chorus

## Administrative Staff

Diane Salisbury  
Executive Director

Adam Perez  
Patron Services Manager

Meg Engquist  
Executive Assistant  
& Event Support

Sean Laperruque  
Bookkeeper

## Artistic Staff

R. Theodore Bietz  
Orchestra Manager

Mea Daum  
Chorus Manager

Celeste Oram  
Orchestra Production Asst.

Ulrike Burgin  
Orchestra Librarian

Marianne & Dennis Schamp  
Chorus Librarians

## Outreach

Victoria Eicher  
Marty Hambricht  
Mary Ellen Walther

## How To Reach Us

La Jolla Symphony & Chorus  
9500 Gilman Drive  
UCSD 0361  
La Jolla, CA 92093-0361  
Phone: 858.534.4637  
Fax: 858.534.9947  
www.LaJollaSymphony.com

# La Jolla Symphony Chorus

Founded in 1965 by Patricia Smith

**David Chase**, Choral Director

**Patrick Walders**, Acting Choral Director

**Kenneth Bell**, Assistant Conductor | **Victoria Heins-Shaw**, Accompanist

**Mea Daum**, Chorus Manager | **Marianne & Dennis Schamp**, Chorus Librarians

## Soprano

Ciara Agrella  
Danbi Ahn  
Frances Castle  
Sally Dean  
Beda Farrell  
Alyssa Finlay  
Meryl Gross #  
Marty Hambricht  
Martha Hamilton  
Ida Houby  
Karen Johns  
Hima Joshi  
Karen Kakazu  
Kathryn Kinslow  
Constance Lawthers  
Carol Manifold  
Judy Manuche  
Mona McGorvin  
Celeste Oram  
Yasaman Pirahanchi  
Lauren Sabb  
Amy Schick  
Mitzi Sobash  
Jeanne Stutzer  
Mary Ellen Walther  
Sharon Willoughby  
Gloria Xefos  
Katerina Zorko

## Alto

June Allen  
Sonja Brun  
Peggy Clapp  
Elinor Elphick  
Karen Erickson  
Clare Friedman  
Cathy Funke  
Kathleen Gullahorn  
Vicki Heins-Shaw  
Renée Gordon Holley  
Liz Jenkins  
Deanna Johnson  
Jin-Soo Kim  
Jean Lowerison  
Debby Park  
Cinda Peck  
Barbara Peisch  
Rebecca Ramirez  
Satomi Saito ##  
Marianne Schamp  
Lisa Shelby  
Janet Shields #  
Carol Slaughter  
Latifah Smith  
Jil Stathis  
Pamela Surko  
Susan Taggart  
Melissa Troyer  
Amee Wood

## Tenor

Joseph Allen  
George Anderson  
Nathan Daum  
Walter Desmond ##  
Andrew King  
Peter Kofoed  
Anthony Leonard  
Sean McCormac #  
Joe Mundy  
Samuel Rohrbach  
Nathan Samskey  
Brandon Elán Thibeault  
Bill Ziefle

## Bass

Kenneth Bell  
Dorian Bell  
Jack Beresford ##  
Roland Blantz  
Charles Carver  
Ned Dearborn  
Larry Dickson  
Paul Engel  
Bryan Heard  
Don Jenkins  
Michael Kaehr  
Steve Marsh  
Don Mayfield  
William Miller  
Gilbert Omens  
Ray Park  
Dennis Schamp  
Stewart Shaw #  
Steve Shields  
Otto Sorensen  
Richard Tilles  
Mark Walters  
Robert Wennerholt

# Section Leader

## Assistant Section Leader

## Shop at Smile.Amazon.com!

Shop Amazon and designate LJS&C as the charitable program you want your shopping to support and Amazon will contribute a portion of every purchase! It's so easy to give. Enter the Amazon website through the following portal and sign up today:

<http://smile.amazon.com/ch/95-1962652>

**amazon**smile  
You shop. Amazon gives.

# La Jolla Symphony Orchestra

Founded in 1954 by Peter Nicoloff

**Steven Schick**, *Music Director*

**R. Theodore Bietz**, *Orchestra Manager* | **Ulrike Burgin**, *Orchestra Librarian* | **Celeste Oram**, *Production Assistant*

## Violin I

David Buckley, *Concertmaster*  
Peter Clarke, *Asst. Concertmaster*  
Aram Akhavan  
Angelo Arias  
Sofia Asasi  
Susanna Han-Sanzi  
Jonathan Ma  
David Medine  
Girish Nanjundiah  
Wendy Patrick  
Jeanne Saier  
Jonathan Smith  
Ted Tsai  
Alexander Wang

## Violin II

Andy Helgerson, *Principal*  
Gary Brown, *Asst. Principal*  
Raina Borum  
Leanne Chen  
David Cooksley  
Judy Gaukel  
Pat Gifford  
Vivian Han  
Igor Korneitchouk  
Peter Ouyang  
Ina Page  
Brad Peters  
Henry Song  
Andrew Wang

## Viola

Daniel Swem, *Principal*  
Nancy Swanberg, *Asst. Principal*  
Emily Bentley  
Madison Carmichael  
Byron Chow  
Loie Flood  
Betsy Faust  
Anne Gero-Stillwell  
Roark Miller  
Sheila Podell  
Cynthia Snyder  
Thaddeus Wiktor

## Cello

Caitlin Fahey, *Principal*  
Max Fenstermacher, *Asst. Principal*  
Alana Borum  
Uli Burgin  
Curtis Chan  
Valerie Chen  
Melissa Chu  
Carolyn Sechrist  
Cliff Thrasher  
Carol Tolbert

## Contrabass

Christine Allen, *Principal*  
Camellia Aftahi  
Darrell Cheng  
Bill Childs  
Lance Gucwa  
Jessica Kovach  
Nathaniel Mayne  
Marc Olsher

## Flute

Elena Yarritu, *Principal*  
Erica Gamble  
Carol Lam  
Michael Matsuno

## Piccolo

Erica Gamble  
Michael Matsuno

## Oboe

Carol Rothrock, *Principal*  
Heather Marks-Soady  
Glencora Davies

## English Horn

Heather Marks-Soady

## Clarinet

Jenny Smerud, *Principal*  
Gabe Merton  
Curt Miller

## E♭ Clarinet

Gabe Merton

## Bass Clarinet

Gabe Merton  
Steve Shields

## Bassoon

Tom Schubert, *Principal*  
James Swift

## Contrabassoon

William Propp

## Horn

Cynthia McGregor, *Principal*  
David Ryan, *Asst. Principal*  
Buddy Gibbs  
Monica Palmer  
Jonathan Rudin

## Trumpet

Ken Fitzgerald, *Principal*  
Marcelo Braunstein  
Joshua Goldstein  
Andrew Harrison

## Trombone

R. Theodore Bietz, *Principal*  
Ryan Williams

## Bass Trombone

Matthew Faust

## Tuba

Kenneth Earnest

## Timpani

James Beauton  
Sandra Hui

## Percussion

James Beauton, *Principal*  
Christopher Clarino  
Sandra Hui  
Andrew Kreysa  
Garrett Sigler

## Celeste

Hazel Friedman

## Piano/Electric Keyboard

David Han-Sanzi

## Harp

Elena Mashkovtseva  
Donna Vaughan

# Contributors

The La Jolla Symphony & Chorus Association is deeply grateful to the Department of Music at UC San Diego for its generous support and assistance. The association would also like to acknowledge the generosity of its chief benefactress Therese Hurst, who upon her death in 1985 left her estate to the association providing an endowment.

The La Jolla Symphony & Chorus Association is a 501(c)3 non-profit corporation, making your donation tax-deductible. LJS&C thanks the following contributors for their support of the 2015-2016 season. We make every effort to ensure that our contributors' names are listed accurately. If you find an error, please let us know and we will correct it.

## ANNUAL GIFTS

Donations listed below were received  
November 13, 2014 - November 13, 2015.

### Major

**Sponsor** \$25,000+

City of San Diego,  
Commission for Arts & Culture  
Department of Music, UCSD

### Season

**Underwriter** \$15,000+

Anonymous

**Angel** \$10,000+

Michael & Nancy Kaehr  
Price Charities  
Qualcomm Foundation  
SD County Board of Supervisors  
Amee Wood & Eric Mustonen

**Benefactor** \$5,000+

Gary & Susan Brown  
Hellenic Cultural Society  
Drs. Ida Houby & Bill Miller  
Kiwanis Club of La Jolla  
Diane Salisbury & Robert Whitley  
Harold & Suzy Ticho

**Sustainer** \$2,500+

Maxine Bloor  
Eric & Pat Bromberger  
Dr. & Mrs. Curtis Chan  
Mea & Gaelen Daum  
Dr. Robert Engler & Julie Ruedi,  
In memory of Joan Forrest  
Beda & Jerry Farrell  
Pat Finn-Burkhard & Walt Burkhard  
Joan Kastner  
Donald & Julie MacNeil  
Bob & Catherine Palmer  
Milton & Jeanne Saier  
Steven & Brenda Schick  
Steven & Janet Shields

Otto Sorensen & Mary Gillick  
In memory of Elli Valborg Sorensen  
Dr. Jim Swift & Suzanne Bosch-Swift  
Francis J. Tonello

**Supporter** \$1,500+

George & Sarilee Anderson  
Mark & Suzanne Appelbaum  
J. Lawrence Carter & Jeanne Ferrante  
Glenn Casey & Rochelle Kline-Casey  
Bernard Eggertsen & Florence Nemkov  
Dr. & Mrs. Paul Friedman  
Marty Hambright  
Stephen L. Marsh  
Brian & Sherri Schottlaender  
Randy & Trish Stewart

**Associate** \$1,000+

June & Dan Allen  
in honor of Vicki Heins-Shaw  
Gayle Barsamian & David Clapp  
David & Ann Chase  
Gordon & Lauren Clark  
Donald & Frances Diehl  
Family of Joan Forrest  
Judy & Robert Gaukel  
David & Pat Gifford  
Peter Gourevitch & Celia Falicov  
Sonya Hintz  
Ted & Beverly Kilman  
Nancy Moore  
Tom & Barbara Peisch  
Bernard & Ann Porter  
Ashley Robinson  
Dr. David D. Smith  
Paul Symczak & Debra Weiner  
Sandra Timmons & Richard Sandstrom

**Patron** \$500+

Marian Archibald\*  
in memory of Tom Nee  
Rosa Maria Arias  
Hans Beck  
Mary Berend

Nelson & Janice Byrne  
Walter & Ann Desmond  
Nancy & Joel Dimsdale  
Kenneth Earnest Jr.  
Ken Fitzgerald  
Perla & Julius Fox  
Michael & Meryl Gross  
Kim Jin-Soo  
Karen Johns & Peter Jorgensen  
Monique Kunewalder  
Carol C. Lam  
James & Lois Lasry  
Albert McMain & Elaine Wolfe  
Nolan & Barbara Penn  
Carol Plantamura & Felix Prael  
Fredrick & Beverly Price  
Alex & Valerie Rubins  
Thomas Schubert  
The Preuss Foundation  
Ted & Anna Tsai  
Molli & Arthur\* Wagner  
Peter & Mary Ellen Walther

**Member** \$250+

Mr. & Mrs. Michael Allen  
Arleene Antin & Leonard Ozerkis  
Kathy Archibald  
Roland Blantz  
George & Uli Burgin  
Capita Foundation  
Allan & Nancy Chapman  
Geoff Clow  
Dr. Carolyn Downey  
Julia S. Falk  
Amanda & Greg Friedman  
Bill & Cathy Funke  
William & Sharon Griswold  
Kathleen Gullahorn  
William Hardin  
Nancy & Bill Homeyer  
Constance Lawthers  
Robert & Jan McMillan  
Raymond & Deborah Park  
Thelma & David Parris

Gordon & Ingrid Perkins  
Dr. Barbara Rosen  
Manuel & Paula Rotenberg  
Carol Rothrock  
Jonathan & Judy Rudin  
Dennis & Marianne Schamp  
Drs. Margaret Schoeninger & Jeffrey Bada  
Carolyn Sechrist  
Nancy Swanberg & Max Fenstermacher  
Frederick Walker & Katharine Sheehan  
Henry & Irene Weber  
Janet White

## **Friend** \$100+

Barbara Allison  
Katherine Archibald  
Angelo Arias  
Arlette C. Ballew  
Bruce & Patricia Bartlett  
Mary Beebe & Charles Reilly  
John Berecochea  
John & Dorothy Beresford  
Jay Biskupski  
Gene & Denise Blickenstaff  
David & Beth Ross Buckley  
Kim Burton  
John & Evon Carpenter  
Mary Carr  
in memory of Norma Podell  
Frances Castle  
Scot Cheatham  
Bobbi Chifos  
Byron Chow  
Judith Collier  
Joe & Ramona Colwell  
Julia Croom  
Todd Dickinson  
Ralph Dilley  
Edward & Edith Drcar  
Jeanine Dreifuss  
F.F.D.  
Dr. Zofia Dziejowska  
Elinor & Art Elphick  
Caitlin Fahey  
Robert C. Fahey  
George & Else Feher  
Pat Fitzpatrick  
Eugene Friedman  
Drs. Einar & Sally Gall  
Colleen Garcia  
Cam & Wanda Garner  
J.M. & Barbara Gieskes  
Genevieve Gonzalez

Stephen Gordon  
Sean Hannify  
Bryan Heard  
Andy Helgerson  
Bobbie Hoder  
Renee Holley  
Jane Howell & George Harrison  
Richard Hubka & Cheri Hubka-Sparhawk  
Don Jenkins  
Drs. Horacio & Sonia Jinich  
Karen Kakazu  
G.F. & Aleta Kerth  
David Kimball  
Elizabeth Kimery  
Drs. Andrew King & Dianne McKay  
Edith Kodmur  
Peter Kofoed  
Mona & Ron Kuczenski  
Barry D. Lebowitz  
Tony Leonard  
Carl & Claudia Lowenstein  
Carol Manifold  
Maryann Martone  
Robin & Myles Mayfield  
Mona McGorvin & James Olesky  
Abby McKee  
David Medine  
Janet Merutka  
Roark Miller  
Jack Monger  
Joe Mundy  
Girish Nanjundiah  
Mary Nee  
Elizabeth Newman  
Gudrun Noe  
Ina Page  
Rich Parker  
Warren & Mary Margaret Pay  
Joey Payton  
Cinda Peck  
Sheila Podell & Art Baer  
Rebecca Ramirez  
Milton & Jean Richlin  
Alan & Judith Robbins  
Sue B. Roesch  
Vanya Russell  
Barry & Jan Sharpless  
Jerome Shaw & Joyce Cutler Shaw  
Jack & Bonnie Sipe  
Lisa Smith  
Mitzi Sobash  
Dr. & Mrs. Hans Spiegelberg

Phyllis Strand  
Jeanne & Bill Stutzer  
Pamela Surko  
Susan & Mark Taggart  
Richard Tilles  
Carol Tolbert  
Glenn E. Torbett  
Helen E. Wagner  
Robert Wennerholt  
Andrew Wilson  
David & Elke Wurzel  
Gloria Xefos  
Elena Yarritu & Ehud Kedar  
Allison Yunghans  
Bill Ziefle

---

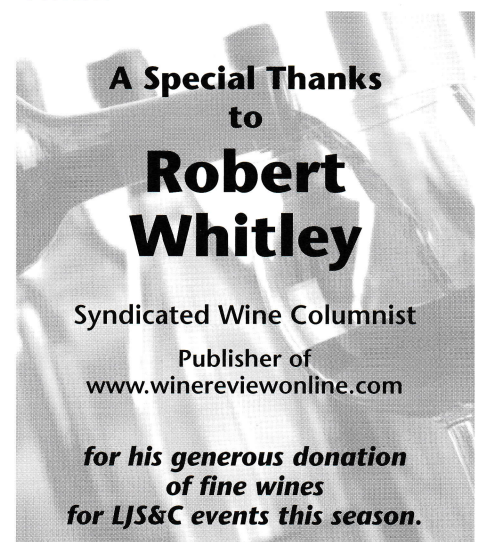
## **THERESE HURST SOCIETY FOR PLANNED GIVING**

Colin \* & Maxine Bloor  
Sue & James Collado  
Kempton Family Trust  
William B. Lindley \*  
Stephen L. Marsh  
Drs. Bill Miller & Ida Houbay  
Richard & Glenda Rosenblatt  
David D. Smith  
Amee Wood & Eric Mustonen

## **CORPORATE GIFT MATCH**

Intuit  
Northrup Grumman  
Qualcomm Charitable Foundation

*\*deceased*



# La Jolla Symphony & Chorus

2015-2016 Season

**Soundscape San Diego:**  
exploration and remembrance

Saturday, February 6 at 7:30pm

Sunday, February 7 at 2:00pm

Mandeville Auditorium, UCSD

**STEVEN SCHICK** conducts

GYÖRGY LIGETI

**Atmosphères**

PHILIP GLASS

**Piano Concerto No. 2**

**"Lewis and Clark"**

Photo: Nina Roberts



with guest artist:

**Lisa Moore**  
piano

ERIK GRISWOLD

**Jeux à la fin du monde**

**WORLD PREMIERE**

CLAUDE DEBUSSY

**La Mer**

**TICKETS: \$29 / \$27 / \$15**

**PURCHASE AT 858-534-4637 OR WWW.LAJOLLASYMPHONY.COM**

Major Sponsor Support  
for the 2015-2016 Season



Major funding provided by the  
City of San Diego Commission  
for Arts and Culture and the  
County of San Diego



QUALCOMM



Kiwanis Club of La Jolla